



Company
Hylewicz CNC Technik
Siemensstrasse 13-15
D - 47608 Geldern
eMail: info@cnc-step.com

ConstruCAM-3D :: Installation Guide - For Demo & Full Version

Dear Customer,

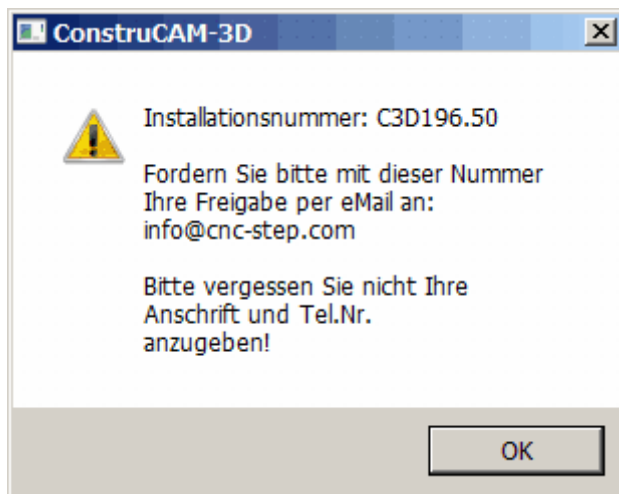
Please use the following guidance notes depending on which installation version you have.

The full version of ConstruCAM supports 18 different export filters, however note that when using the DEMO version of ConstruCAM that only the 'Direct-Mill' export option is available for linking to your installation of Win PCNC.

Please note that the Economy version or better of Win PCNC is necessary to support export in G-Code format. If you are using Win PCNC Light, then only HPGL export can be processed.

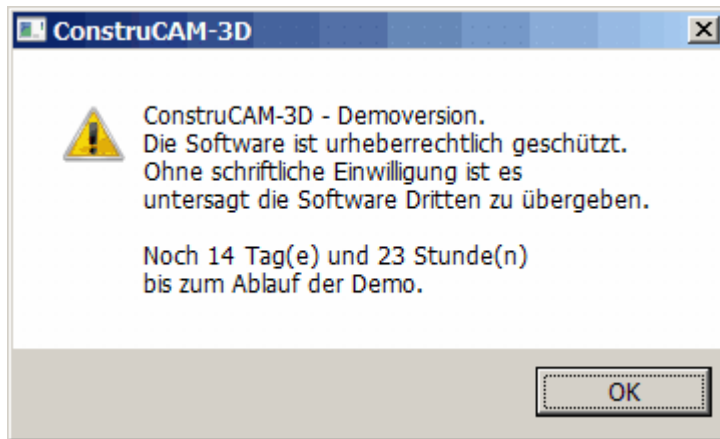
Demo Version Guide:

- 1) Download and unpack the 'ConstruCAM-3D Demo' RAR file (see www.cnc-step.com – Download/Service menu) into a new folder (e.g. ConstruCAM). Now create a shortcut to the program executable 'ConstruCAM-3D.exe' and place on your desktop.
- 2) Now launch the program shortcut. Upon starting, the unregistered software will provide you with a unique installation number, as shown below.



- 3) You need to send this installation number, including details of your full postal address and a contact telephone number, to the following e-mail address -> info@cnc-step.com.

You will then be sent an activating Demo release code that you can enter when opening the program next time.



The software may inform you with the following note: Demo Version expired or – remaining time ...days.... Note that the demo version works for 15 days after the starting the program for the first time. Data export is also limited to 10,000 vectors/export during your evaluation.



Full Version Guide:

1) Download and unpack the 'ConstruCAM-3D Demo' RAR file (see www.cnc-step.com – Download/Service menu) into a new folder (e.g. ConstruCAM). Now create a shortcut to the program executable 'ConstruCAM-3D.exe' and place on your desktop. **Important - Do not open the program just now!!**

2) First rename the file CtlStrDat_.....ahs (that was sent you via e-mail) as **CtlStrDat.dll** and save this file in the ConstruCAM installation folder. You will be asked to either replace the old file or to cancel. **Select the option to replace (overwrite) the old file with this new one!**

3) Now launch the program shortcut. Enter your personalised release code, sent to you previously, to finalise registration on your PC.

Please note that the software, release code and installation number must not be passed to third parties, copied in any way or published anywhere else except on our web site. Contravention will be prosecuted.

If you do have any further queries, please do not hesitate to contact us.

Many thanks

Kind regards
Frank Hylewicz



Copyright 8/2009 by Hylewicz CNC-Technik